

Who Are We

The Speech & Language department consists of six Masters certified speech-language pathologists. Our role is to provide eligible students with skills, supports, and strategies to allow them to access the general curriculum and communicate more effectively.

Sharon Krendel-Ames (High School & Middle School):

Sharon received her Master's of Science in Speech & Language Pathology, she is certified by ASHA and is licensed by Massachusetts as a Speech & Language Pathologist. She also holds teacher certification in Massachusetts.

Jacqueline Macomber (David Mindess School):

Jacqueline earned her Bachelor's degree in Communication Sciences and Disorders from the University of New Hampshire. She received her Master's degree in Speech Language Pathology from Northeastern University. She is licensed by Massachusetts as a Speech & Language Pathologist. She is ASHA certified and also holds educator licensure in Massachusetts.

Jennifer Hoffmaster (David Mindess School):

Jennifer earned a Master of Science degree in Speech and Hearing Sciences from the University of North Carolina, Chapel Hill in 2001. She is licensed by Massachusetts as a Speech & Language Pathologist, is ASHA certified and holds professional licensure in Massachusetts.

Jane Guiney (Warren School):

Jane graduated from Boston College with a Bachelor's Degree in Human Development and holds a Master's of Science in Speech from Emerson College. She is ASHA certified, licensed as a Speech & Language Pathologist and holds educator licensure in Massachusetts.

Amy Mann (Warren School):

Amy earned her Bachelor's degree in Communication Disorders from Worcester State University. She earned her Master's degree in Speech-Language Pathology from Worcester State University. She is ASHA certified.

Cristina Wright (Pittaway School):

Cristina received her B.A. in Psychology from Holy Cross College and went on to receive her M.S. in Communication Sciences and Disorders at Worcester State University. She is ASHA certified and is licensed to practice Speech & Language in Massachusetts.

Types of Instruction:

In order to ensure the acquisition of improved communication skills the following services are provided depending on the students level of need:

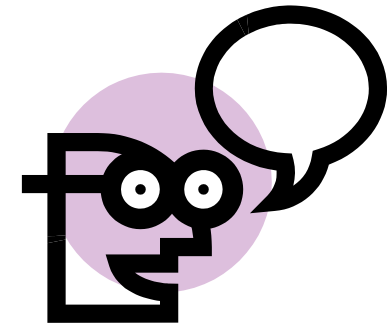
- ◆ Inclusion -
Services provided within the regular education classroom setting
- ◆ Pull-out (Individual/small group) -
Students receive instruction outside of the general education classroom as determined on an individual basis at TEAM meetings
- ◆ Consult -
Therapist consults with other service providers, classroom teachers and parents to ensure generalization of skills
- ◆ Short-term intervention
For students without Special Education IEP's generally to address articulation issues
- ◆ Home programs -
At the William Pittaway School home-based activities are provided for students with specific speech errors. Parent, student and therapist work together at monthly meetings to assess progress, update materials and ensure generalization.



Services

Services may be provided for students displaying difficulties in one or more of the following areas:

- ◆ Articulation
- ◆ Language & Processing
- ◆ Fluency
- ◆ Hearing/Aural Rehabilitation
- ◆ Pragmatics/Social Skills



Evaluations

Speech-Language Pathologists are also involved in:

- ◆ Pre-referral process through the Response to Intervention (RTI) team.
- ◆ Multidisciplinary team assessments to determine students' eligibility and need for special education
- ◆ Development and implementation of Individualized Educational Programs (IEPs)

◆

Communication With Us

Contact and scheduling information is sent home within the first two weeks of school. If your child has a Speech-Language Pathologist as his/her liaison, we will also contact the classroom teacher.



To Reach Us:

Ashland High School: 508-881-0177
Ashland Middle School: 508-881-0167
David Mindess School: 508-881-0166
Henry E. Warren School: 508-881-0188
William Pittaway School: 508-881-0160

You can also locate individual email addresses by accessing our website at www.ashland.k12.ma.us.



Speech-Language Pathology Services



Ashland Public Schools Student Services

Updated 2014