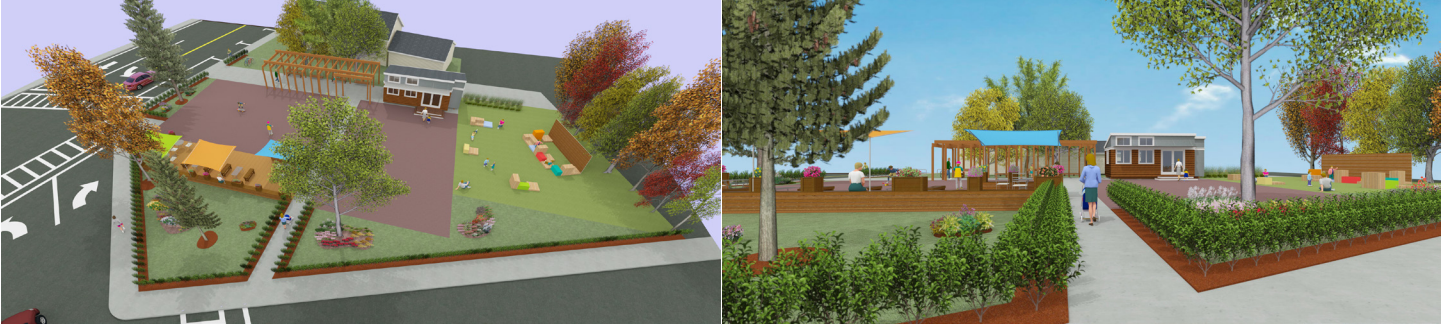


Look what's Popping Up in Ashland...



The Corner Spot!

Wouldn't it be great to have a coffee shop, an ice cream parlor, or a bakery to walk to in a family-friendly location? Wouldn't you like to relax in the shade, run into friends and watch the kids play? Now, we can have all of that--right in the heart of downtown! Located at 6 Cherry Street (corner of Main and Pleasant), this will be a place our community can gather.

What is The Corner Spot?

- A "pop-up" temporary home for local businesses to test drive their store front dream
- A kid-friendly safe space with games, swings, and green space for kids to play
- An outdoor living room with comfortable seating (in sun and shade)
- A beautifully landscaped, community destination that will showcase local businesses

**We can't do it without you! Our goal is to raise \$25,000 by December 7!
If we reach this goal, MassDevelopment will match it dollar for dollar!
All funds raised will be used to construct The Corner Spot.**

For more information:

www.ashlandmass.com or  [@thecornerspotashland/](https://www.facebook.com/thecornerspotashland/)

To donate: www.patronicity.com/Ashland



Let's move Ashland forward together. Be a part of it!

Questions?

Contact Beth Reynolds, Ashland Economic Development Director, at breynolds@ashlandmass.com 508-532-7905.